

# **TINY XS Series**

## **Manual**

We will not be responsible for the change of this item, nor can we actively notify consumers of any update or change. If the material, specifications or the contents of the parts and packaging recorded in this manual are changed, please refer to [LDARC.com](http://LDARC.com). This product is suitable for 14 years old and above.

## TINY 6XS PNP

---



- 【Wheelbase】 : 65mm
- 【Weight】 : 25.6(Without BAT and RX)
- 【Motor】 : 716 with bursh(17600KV)
- 【Prop】 : 31mm-4baldes 0.8mm
- 【FC+VTX】 : F411-BVT(25mW 16CH)
- 【Camera】 : NANO3-OSD
- 【Receiver】 : NO RX/RX2A/AC900
- 【Battery & plug】 : 3.8V 250mAh, PH2.0

### TINY 6XS PNP Package list

---



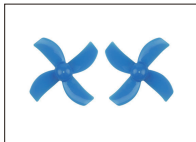
TINY 6XS\*1



3.8V 250mAh\*1



1-way charger\*1



31mm-4blades\*2pairs



Prop tool\*1



PH2.0 conector\*2

TINY 6XS PNP version options NO RX, RX2A, AC900

## TINY 7XS PNP

---



- 【Wheelbase】 : 75mm
- 【Weight】 : 35.3(Without BAT and RX)
- 【Motor】 : 820 with brush(16000KV)
- 【Prop】 : 1545mm-4blades 1.0mm
- 【FC+VTX】 : F411-BVT(25mW 16CH)
- 【Camera】 : NANO3-OSD
- 【Receiver】 : NO RX/RX2A/AC900
- 【Battery & plug】 : 3.8V 550mAh, PH2.0

### TINY 7XS PNP Package list

---



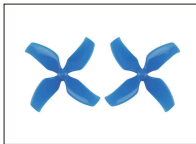
TINY 7XS\*1



3.8V 550mAh\*1



1-way charger\*1



1545-4blades\*2pairs



Prop tool\*1



PH2.0 conector\*2

TINY 7XS PNP version options NO RX, RX2A, AC900

## TINY 7XS RTF Package list



TINY 7XS\*1



X6\*1



G1 FPV Goggles\*1



1- way charger V2\*1



3.8V 550mAh\*1



18650\*1



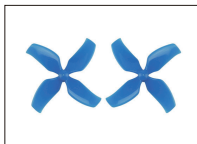
PH2.0\*2



USB carbon\*1



Goggles belt\*1



1545-4blades\*2pairs



Tool\*1



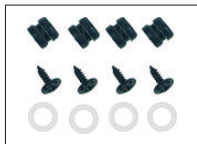
Handbag\*1



Sticker\*1



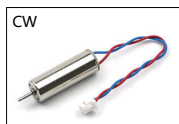
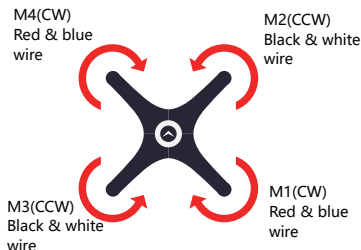
Manual\*1



Parts\*1

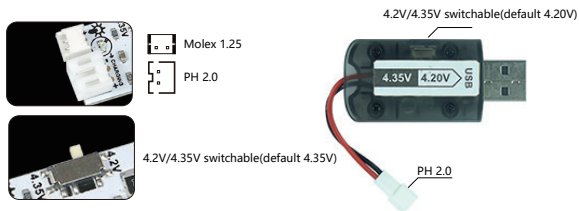
**Remarks: You need to purchase 3 AAA batteries separately (for X6 transmitter)**

## Motor



Pay attention to the motor rotation direction when installing the propeller.

## Charger



Note:Charging the 4.2V battery with 4.35V voltage will cause damage

## FC+VTX

VTX Frequency table **Single click the button on FC to switch VTX channel when powered on.**

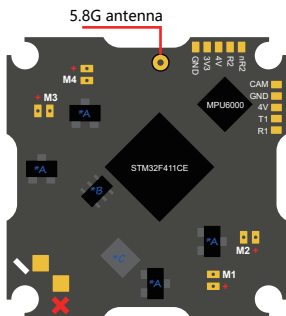
<input checked="" type="checkbox"/> <input checked="" type="checkbox"/> 5658MHZ	<input checked="" type="checkbox"/> <input checked="" type="checkbox"/> 5806MHZ	<input checked="" type="checkbox"/> <input checked="" type="checkbox"/> 5705MHZ	<input type="checkbox"/> <input checked="" type="checkbox"/> 5790MHZ
<input checked="" type="checkbox"/> <input checked="" type="checkbox"/> 5695MHZ	<input checked="" type="checkbox"/> <input checked="" type="checkbox"/> 5843MHZ	<input checked="" type="checkbox"/> <input checked="" type="checkbox"/> 5740MHZ	<input type="checkbox"/> <input checked="" type="checkbox"/> 5820MHZ
<input checked="" type="checkbox"/> <input checked="" type="checkbox"/> 5732MHZ	<input checked="" type="checkbox"/> <input checked="" type="checkbox"/> 5880MHZ	<input checked="" type="checkbox"/> <input checked="" type="checkbox"/> 5760MHZ	<input type="checkbox"/> <input checked="" type="checkbox"/> 5860MHZ
<input checked="" type="checkbox"/> <input type="checkbox"/> 5769MHZ	<input checked="" type="checkbox"/> <input type="checkbox"/> 5917MHZ	<input checked="" type="checkbox"/> <input type="checkbox"/> 5780MHZ	<input type="checkbox"/> <input type="checkbox"/> 5945MHZ

1S brushed, F411 FC, 4in1 5.6A ESC, 25mW 16CH VTX

FC target : **LDARCF411**

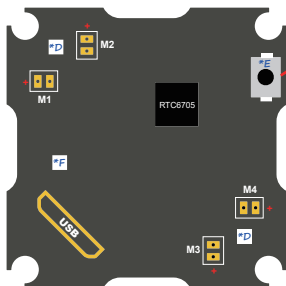
ESC/Motor : **BRUSHED**

Motor recommend PWM frequency : **6000**



1S lipo only 4.35V maximum

- \*A Brush motor driver circuit use 5.6A mosfet include flybsck diode
- \*B 2A 1.2Mhz step-up DC/DC
- \*C CLC filter for camera

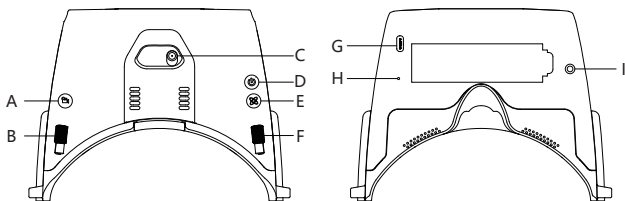


Click button to adjust frequency

- \*D 2 Onboard WS2812 LED\_strip
- \*E <1> **PRESS** this button then power on use USB cable,FC will into DFU mode (STM32 boot mode)  
<2> After FC power on,**CLICK** this button will switch VTX channel
- \*F VTX channel LED

# G1 FPV GOGGLES

Screen	4.3 inch
Resolution	480*272
Optics	Distortionless optical lens
Receiver	5.8G-98dBm high sensitivity single receiver
UI System	Plain text user interface,English interface
Input Power	USB-C 5V/single18650 battery
Dimension	165*98*121mm
Weight	310g



A: One-key frequency search, long press for 3 seconds to search frequency points automatically, short press to switch to video signal (external receiver/built-in receiver signal)

B: No function

C: SMA-KY Antenna interface (the antenna end is inner pin antenna)

D: Power on/off, long press for 3 seconds to power on or off

E: Menu key, short press to enter the menu

F: Scroll wheel

Short press for 1 second to manually adjust the frequency point, scroll to select frequency points or frequency groups, short press to confirm

After entering the menu, slide the wheel to select the menu option, press the wheel to enter the next level

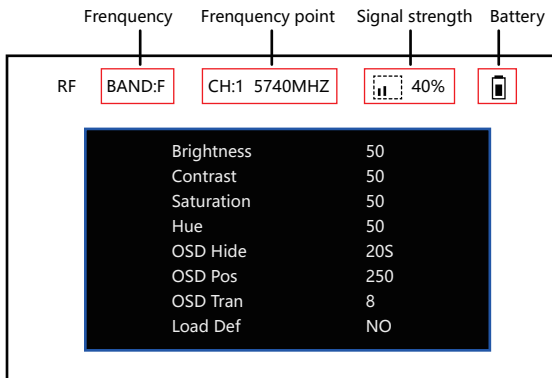
After selecting OSD Hide, OSD Pos, OSD Tran submenu, press the menu button to confirm

G: USB charging and power supply

H: Charging indicator, when red light is always on, charging is in progress; when green light is always on, charging is complete

I: AVIN

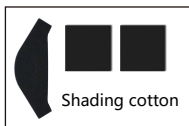
## Display interface



## Frequency Points Table

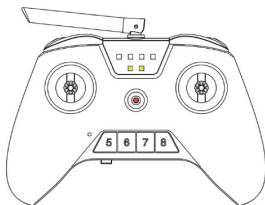
A	B	E	F	R	L
5865	5733	5705	5740	5658	5362
5845	5752	5685	5760	5695	5399
5825	5771	5665	5780	5732	5436
5805	5790	5645	5800	5769	5473
5785	5809	5885	5820	5806	5510
5765	5828	5905	5840	5843	5547
5745	5847	5925	5860	5880	5584
5725	5866	5945	5880	5917	5621

Note: When using shading cotton, please stick the EVA cotton as shown below





## X6 Transmitter



### SCHEMATIC DESCRIPTION

<A> : Power switch.

<B>、<C>、<D>、<E> : 5、6、7、8 channel key.

<F> : Trim key (NEED KEY COMBINATION) :

Trim left stick : hold 5 channel key, toggle trim key.

Trim right stick : hold 8 channel key, toggle trim key.

<G> : Battery indicator : suggest change battery when middle power.

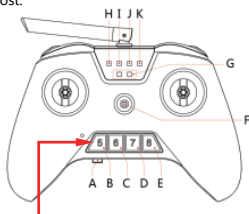
**<H> : 5 channel indicator**

**( ■ RED DIS-ARM, ■ GREEN ARM)**

<I>、<J>、<K> : 6、7、8 channel indicator.

### BIND RECEIVER WITH RADIO

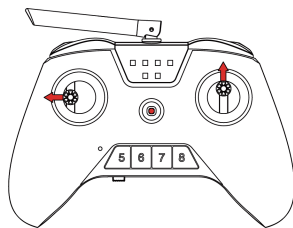
1. Press the button of receiver then power on, green indicator on receiver will blink fast meaning bind mode enable.
2. Press the red button of radio shown as below then power on the radio, yellow indicator on radio shown as below will blink + buzzer meaning radio bind mode enable.
3. Bind success when the indicator of receiver from green fast blink switch to red on. Turn off the radio then power on, indicator of receiver will green on, mean receiver working normal.
4. The indicator of receive green solid meaning working normally, green LED brightness meaning signal strength. Red LED solid meaning receiver signal lost.



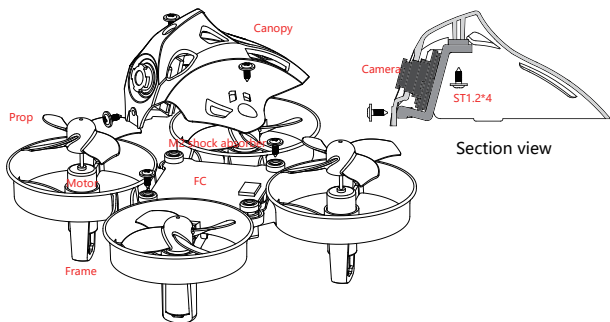
Click, DIS-ARM/ARM

### [OSD Setting Interface]


Center the throttle stick and push to the left, meanwhile pull up the pitch stick to enter the OSD setting interface; push the pitch stick up or down to select menu, and center the roll stick is to enter the submenu.

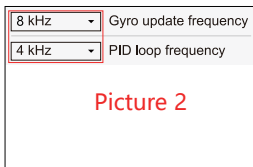
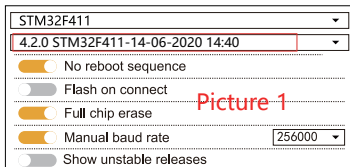


# Installation



## Firmware version and setting

1. Software 
2. Firmware version (Picture 1)
3. Open 8K and 4K (Picture 2)
4. Setting the motor mode is brushed (Picture 3)
5. Receiver settings, open UART2 switch (Picture 4)
6. Default setting ARM function use AUX1 channel (Picture 5)
7. PID Setting (Picture 6)



### ESC/Motor Features

**BRUSHED** ESC/Motor protocol

Motor PWM speed Separated from PID speed

MOTOR\_STOP Don't spin the motors when armed

Disarm motors regardless of throttle status (When ARMED configured in Modes tab via AUX channel)

1070 Minimum Throttle (Lowest ESC value when armed)

2000 Maximum Throttle (Highest ESC value when armed)

1000 Minimum Command (ESC value when disarmed)

Picture 3

Identifier	Configuration/MSP	Serial RX
UART1	<input checked="" type="checkbox"/> 115200	<input type="checkbox"/>
UART2	<input type="checkbox"/> 115200	<input checked="" type="checkbox"/>
UART3	<input type="checkbox"/> 115200	<input type="checkbox"/>

Picture 4



Picture 5

	Proportional	Integral	Derivative
Basic/Acro			
ROLL	42		35
PITCH	46		38
YAW	45		

Picture 6

## Name & Code

Name	Code
TINY 6XS PNP(AC900)	L01 0005
TINY 7XS PNP(AC900)	L01 0006
TINY 6XS PNP(RX2A)	L01 0007
TINY 7XS PNP(RX2A)	L01 0008
TINY 6XS PNP(NO RX)	L01 0009
TINY 7XS PNP(NO RX)	L01 0010
TINY 7XS RTF(MODE1)	L01 0013
TINY 7XS RTF(MODE2)	L01 0014

Name	Code
TINY 6XS KIT	L2 0003
TINY 7XS KIT	L2 0004
716 motor (CW+CCW)	MOTOR.716(CW+CCW)
820 motor (CW+CCW)	MOTOR.820(CW+CCW)
F411-BVT	L03 0002
NANO3-OSD	L03 0003
31mm-4blades	L08 0001
1545-4blades	L08 0002
1-way charger V2	CHARGER.1-WAY 4.2V/4.35V
3.8V 250mAh 30C	BAT.3.8V 250MAH 30C
3.8V 550mAh 50C	BAT.3.8V 550MAH 50C
Universal 18650 battery	L06 0001

## After sale service

1. Provide free reparation service when find the product defect after purchase.
2. Provide pay-needed reparation service when product damage because improper operation.
3. China customers please contact with the after-sales service, overseas client please contact the dealer.

### Flight test

- Transmitter functions properly
- Flying in good condition
- Camera OK
- VTX OK

QC: \_\_\_\_\_

### Package check

- PNP
- RTF
- Frame
- Transmitter
- ID is the same
- All parts of the installation
- Insulating sleeves have been installed manual
- Complete accessories, total \_\_\_\_\_ packages

QC: \_\_\_\_\_