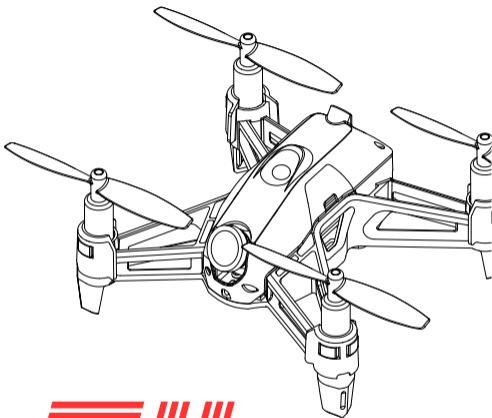


LDARC[®]



T III PNP

T11 Configuration

Name	T11 RACER PNP	T11 RACER RTF	T11 TM PNP	T11 TM RTF
Wheelbase	106mm			
Motor	8520-12000KV burshed			
Prop	65mm-2blades(1.0)			
FC	TG01-FC			
Battery&Plug	3.7V 660mAh, GNB27			
Charger	1-way charger(GNB27)			
LED	ET-G2			
T11 Bumper	Yes			
Weight	40g		48g	
Camera	/	/	Nano2	Nano2
VTX	/	/	Q25TMQ	Q25TMQ
Timer	/	/	Infrared receiver	Infrared receiver
Handbag	/	Handbag P3	/	Handbag P3
Transmitter	/	EA8	/	EA8

Package list

T11 RACER PNP



PNP*1



Battery*1



Charger*1



Prop*10pairs



Bumper*4



Prop tool*1



FPV canopy*1

T11 RACER RTF



PNP*1



Battery*1



Charger*1



Prop*10pairs



Bumper*4



Prop tool*1



FPV canopy*1



EA8*1



Handbag P3*1

T11 TM PNP



PNP*1



Battery*1



Charger*1



Prop*10pairs



Bumper*4



Prop tool*1



LEGO canopy*1

T11 TM RTF



PNP*1



Battery*1



Charger*1



Prop*10pairs



Bumper*4



Prop tool*1



LEGO canopy*1

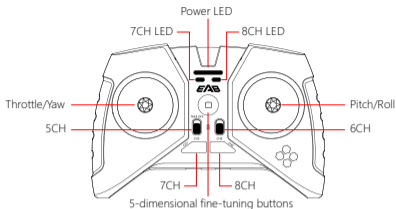


EA8*1



Handbag P3*1

Transmitter



5CH: When the dial switch is at the bottom, the aircraft is locked, dial up to TAKE OFF, the aircraft is unlocked (can take off), such as dialing the key, When the switch is in the unlocked position to turn on the power of the remote control, the remote control beeps and alarms, but there is no signal output. after the switch is reset, The remote control works fine.

6CH: When the key switch is at the bottom, it is the auto-stable mode. and when it is dialed to the top, it is the altitude hold + auto-stable mode.

7CH: In the locked state of the aircraft, short press can adjust the color of the RGB lights behind the aircraft; in the unlocked state, short press can turn on/off the headless mode.

8CH: in the locked state of the aircraft, short press can adjust the color of the RGB lights in front of the aircraft; in the unlocked state, short press can turn on/off the height limit mode.

Power charging indicator:

1. The remote control power display, red light means 10-30% power, yellow light means 30-60% power, green light means 60-100% power.
2. Power off and charge, the indicator light is solid red to indicate charging, and steady green indicates that the charging is completed.
3. When the remote control is out of power, the red light will flashes and the buzzer beeps(Di Di Di...).

5-dimensional fine-tuning buttons:

1. Not enabled by default
2. Press and hold the fine-tuning button to the right for 2 seconds with a long beep will activate the fine-tuning of the right joystick.
3. Press and hold the fine-tuning button to the left for 2 seconds with a long beep will activate the fine-tuning of the left joystick.
4. After 10 seconds, three beeps will be heard to complete the fine-tuning.
5. One beep when fine-tuning up and down ,then left and right, and a long beep when fine-tuning is in the middle

Frequency Bind:

Turn on the remote control, the power indicator flashes green after 2 beeps; then powered on the aircraft ,if the tail lights flash red,indicates that the frequency bind is in progress; when the taillights of the aircraft and the power indicator of the remote controller are solid steady red, it means that the frequency bind is completed.

Joystick Calibration:

After the frequency bind between the aircraft and the remote controller is completed, powered on the aircraft again. Press the 8th channel of remote control, and turn the remote control on at the same time.When the power indicator of the remote control flashes in yellow breathing, move the joystick as far as possible, and when the indicator turns yellow and flashes quickly,Put the joystick in the neutral position; if the indicator light turns steady red, it means the calibration is complete, then you need to restart it.

Aircraft Calibration:

Power on the aircraft and the remote controller, move the remote controller's left joystick to the " bottom right position",and the right joystick to the "bottom left position"at the same time .and the taillights of the aircraft flash rapidly.

Motor

M4(CW)

Red&Blue wire

M2(CCW)

Black&White wire



M3(CCW)

Black&White wire

M1(CW)

Red&Blue wire

Clockwise motor(CW)



Counterclockwise motor(CCW)



Pay attention to the direction of motor and prop

Battery and Charger



Turn the charger switch to 4.20V before charging.

VTX

Q25TMQ 25mW 32CH VTX include lap timer

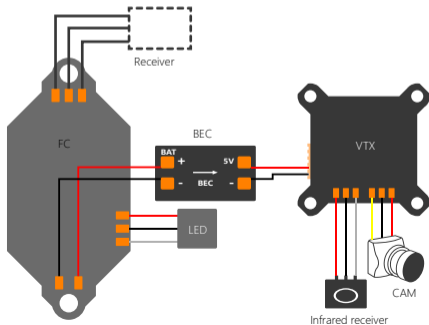
Need LDARC's LT1000 lap timer gate, details of LT1000 please visit website

<http://note.youdao.com/groupshare/?token=C9CDEA62AC604211B4872270D06925A9&gid=119274086>

Click the button after power on can change the frequency point

■ ■ ■ 5800Mhz	■ ■ ■ 5806Mhz	■ ■ ■ 5847Mhz	■ □ ■ 5790Mhz
■ ■ ■ 5828Mhz	■ ■ ■ 5843Mhz	■ ■ ■ 5740Mhz	■ □ ■ 5820Mhz
■ ■ ■ 5733Mhz	■ ■ ■ 5866Mhz	■ ■ ■ 5760Mhz	■ □ ■ 5860Mhz
■ ■ □ 5769Mhz	■ ■ □ 5745Mhz	■ ■ □ 5780Mhz	■ □ □ 5752Mhz
■ ■ ■ 5362Mhz	■ ■ ■ 5510Mhz	■ ■ ■ 5695Mhz	■ □ ■ 5905Mhz
■ ■ ■ 5400Mhz	■ ■ ■ 5547Mhz	■ ■ ■ 5705Mhz	■ □ ■ 5917Mhz
■ ■ ■ 5436Mhz	■ ■ ■ 5584Mhz	■ ■ ■ 5840Mhz	■ □ ■ 5925Mhz
■ ■ □ 5473Mhz	■ ■ □ 5658Mhz	■ ■ □ 5880Mhz	■ □ □ 5945Mhz

FC Definition



After sale service

1. Provide free reparation service when find the product defect after purchase.
2. Provide pay-needed reparation service when product damage because improper operation.
3. China customers please contact with the after-sales service, overseas client please contact the dealer.

PNP/RTF Test report ID :

Flight test

- Transmitter functions properly
- Flying in good condition
- Camera OK
- VTX OK

QC: _____

Package check

- PNP
- RTF
- Frame
- Transmitter
- ID is the same
- All parts of the installation
- Insulating sleeves have been installed manual
- Complete accessories, total ____ packages

QC: _____